

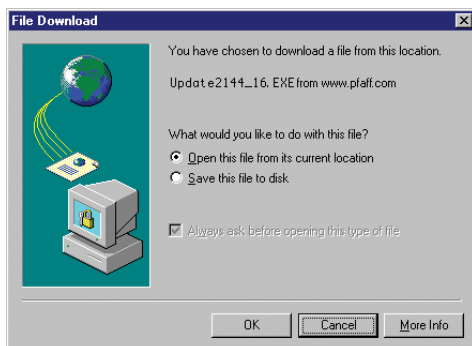
## Update your Pfaff creative 2144

Together with your Pfaff creative 2144 you received a special cable with a computer connection on one end and a creative card on the other. Use this cable when updating your machine or when transferring data between your Pfaff creative 2144 and the File Assistant on your computer. Enter the Pfaff home page at [www.pfaff.com](http://www.pfaff.com) and click on 2144 update.

Click to download.

Fill out your registration form or enter your e-mail address and start the search. When the registration is complete, start the download. The following screen appears.

Depending on the Windows version installed on your computer, your screen may look different than those shown.



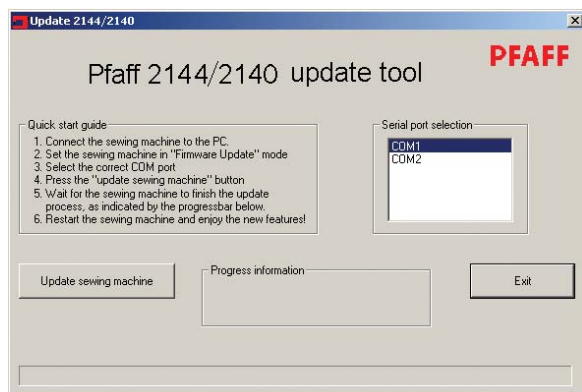
To run the download program directly from the site, choose "Open this file from its current location".

If you want to download the program to your hard drive and update the machine later, choose "Save this file to disk". See "How to save the update program to your hard drive".



Click "Yes" to continue.

When the following screen appears the update program is activated and you can close your Internet connection.



## Set your Pfaff creative 2144 in the update mode

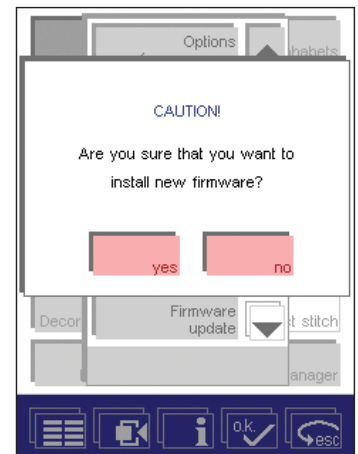
Connect the cable to a COM-Port on your computer, then insert the card in one of the card drives.

Turn the machine on.

Touch the Main Menu.

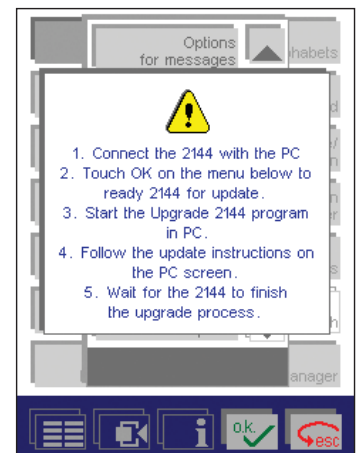
Touch Context menu. Touch "Firmware update".

Choose "yes" to the prompting question.



A new pop-up with updating instructions appears.

Read the instructions, then touch "ok" to prepare your Pfaff creative 2144 for updating.



Yet another pop up appears telling you that the machine is waiting for data.

Click on the "Update sewing machine" icon on the computer to start the update.

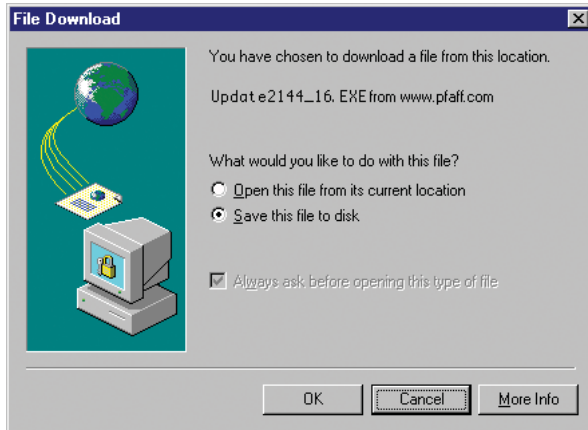
The updating process will begin and after approximately 20 minutes, you can restart the sewing machine and your Pfaff creative 2144 is ready to use with the new program version.

If you have problems updating your Pfaff creative 2144, see section "Trouble shooting".

## How to save the update program to your harddrive

Depending on the Windows version installed on your computer, your screen may look different than those shown.

Click on the update link, the following screen appears.

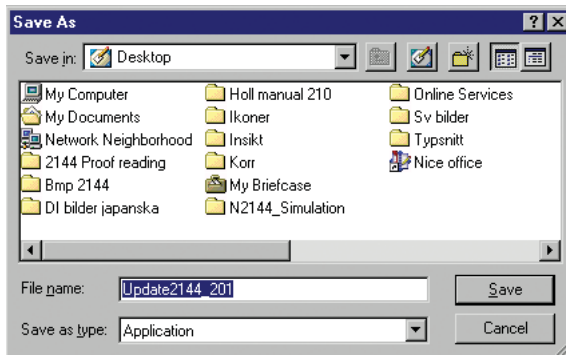


Choose "Save this file to disk" by clicking in the white circle in front of the text (if it has a dot in front of it, it is already selected). Click "OK".

The Save As window appears. If you have updated your 2144 previously, browse to the update folder you created and save the new file there. Otherwise create a new folder according to the instructions below.

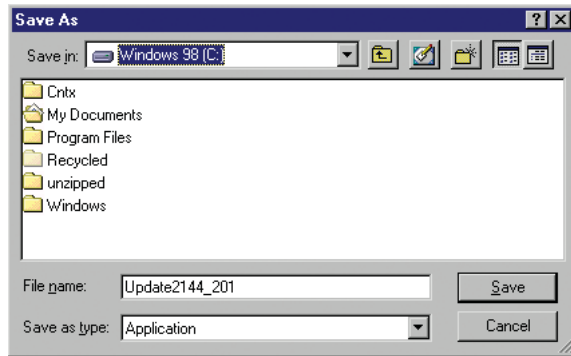
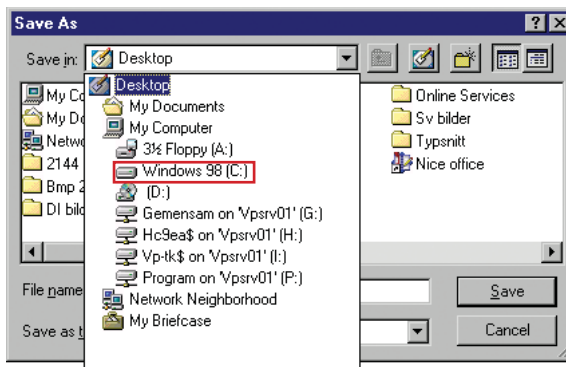
### Create a folder to save in


After the words "Save In", left mouse click on the arrow down symbol.

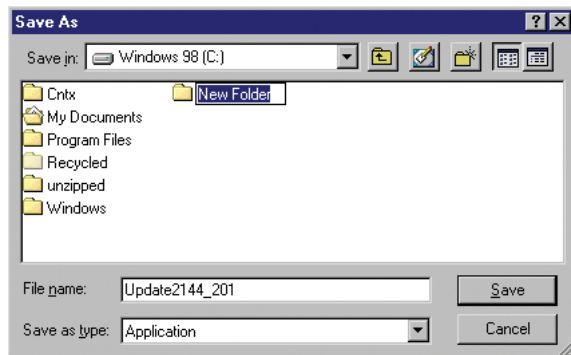


Your hard drive is most often called "Local Disk" and is followed with a C: as the name of the drive.

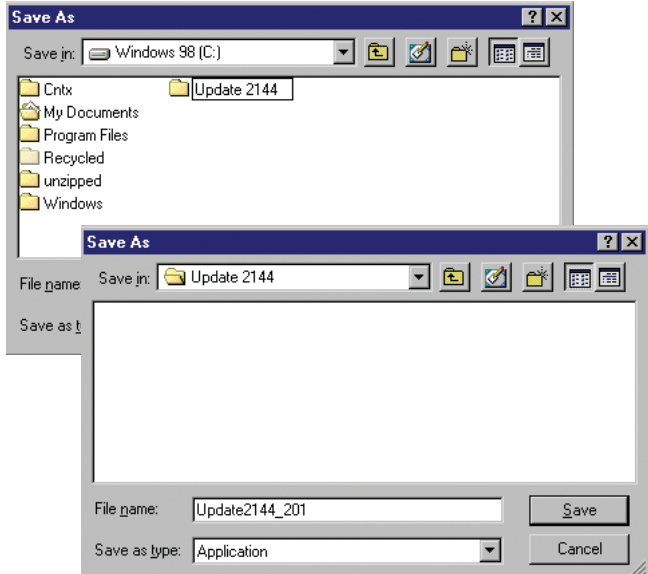
Find your hard drive and left mouse click to open it.



Click on the new folder icon, , to create a new folder on your hard drive.



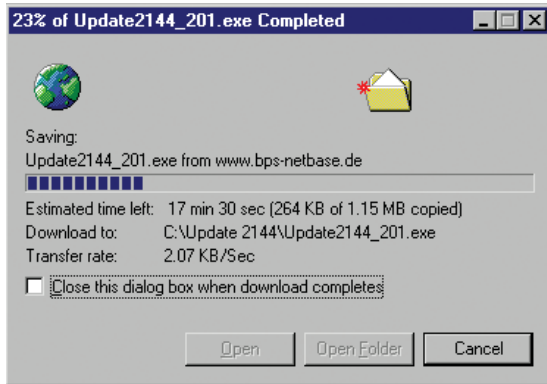
The new folder is selected so you can enter a new name. Name the folder "Update 2144".



Double-click on the folder to open it.

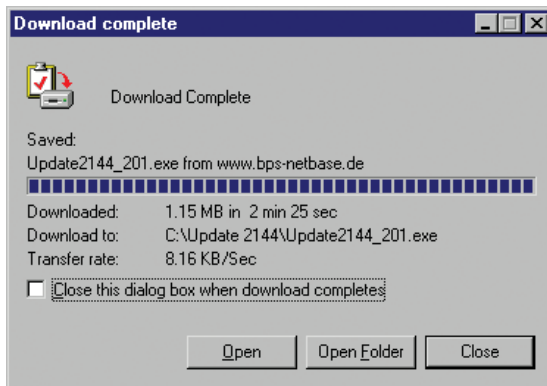
Left mouse click on the "Save" icon to save the update file in the folder.

The saving to the folder begins.



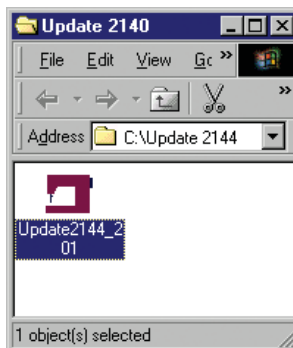
The speed of your Internet connection will determine how long the download will take.

The file "Update 2144" has now been downloaded.



Left mouse click on the "Open folder" icon, to open the folder where the update file is stored.

*(Depending on the settings in your computer the above window might close automatically. If so, please follow the instructions under "Update later")*



Double-click the left mouse button on the "Update 2144" icon.

The update program starts.

Follow the instructions on the screen and set your 2144 in the update mode (see page 3-23).

## Update later

If you want to update your Pfaff creative 2144 at a later time, left mouse click on the "Close" icon. If the "Download complete" screen is closed automatically, disregard the above.



When you want to update your 2144, left mouse double click on the "My Computer" icon on your desktop (the opening screen when you first turn on your computer). Left mouse double click on the C: drive. Left mouse double click on the "Update 2144" folder to open it.



Double click on the "Update 2144" file

The update program starts.

Follow the instructions on the screen and set your 2144 in the update mode (see page 3-23).

## Trouble shooting

- The message "Unable to open COM-port" appears. Check that the correct COM-port is selected in the serial port selection list.
- The message "Unable to initialize the sewing machine monitor" appears. Check all connections between the computer and the machine. Switch off your Pfaff creative 2144, restart and set it in the update mode. Restart the update program.
- If a communication error occurs, check the connection to the computer, turn the sewing machine off and back on again. When turning the machine on, the screen will be black. Click the "Update sewing machine" icon on the PC. Within a few seconds the updating process will start again.